

# Guide By Your Side Quarterly Report



October - December 2024

*"What works for your child is what makes the choice right."*™

## OUR MISSION:

The Illinois Hands & Voices Guide By Your Side (ILHV GBYS) program provides unbiased emotional support and resources by trained Parent Guides to families with children who are deaf/hard of hearing.

Through IL Hands & Voices fundraising, personal donations and funding through the Illinois Early Hearing Detection and Intervention Program (EHDII), Illinois Hands & Voices Guide By Your Side is able to provide free services to families. Families can be referred to the program from providers or call directly to participate.

## CELEBRATING ANNIVERSARIES:

Every fall we reflect on the past year and celebrate the anniversaries of our Guide By Your Side team. As a program we currently recognize anniversaries at the 2, 5, 10 and 15 year marks.

In November, we recognized Corie Fulton, Maira Nava and Megan Christoffel for their service and dedication to our program over the past two years.

In addition to serving the families they work with they also volunteer their time to support our annual chapter fundraiser. We are very fortunate to have these ladies as part of our team!



## CONTACT US:

Carrie Balian, Program Coordinator

224.343.1873

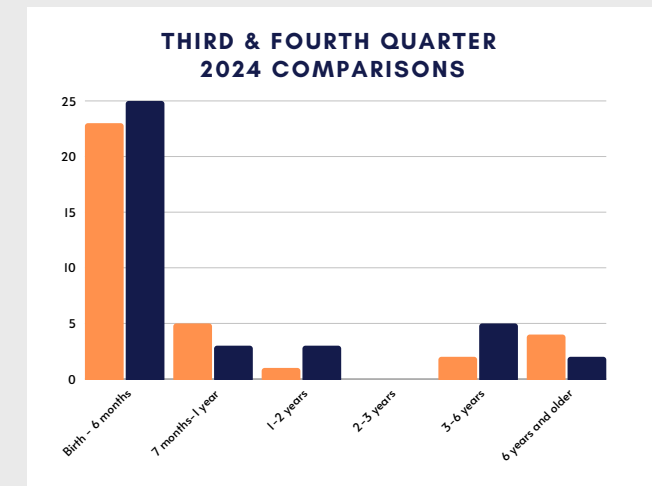
ilhvgbys@gmail.com

<https://www.ilhandsandvoices.org/guide-by-your-side>

## PROGRAM INFORMATION:

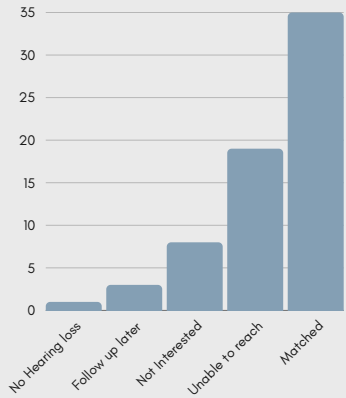
- 1 Program Coordinator
- Part C to Part B Transition Specialist
- LTF (Lost to Follow Up) Specialist
- 10 Parent Guides (PG) - 2 of the PG's are also DHH
  - Located throughout the state
  - Backgrounds vary in communication and amplification opportunities
  - Guides who are native Spanish speakers
  - Parent Guides who are deaf
- 4 DHH Guides
  - Different communication and amplification modalities
  - Various hearing differences
  - Diversity in cultural representation

## CONNECT WITH US



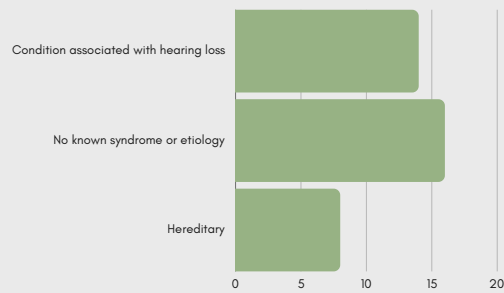
Orange bars represent 2024 third quarter GBYS child age at enrollment  
Blue bars represent 2024 fourth quarter GBYS child age at enrollment

# GBYS Data from October - December 2024

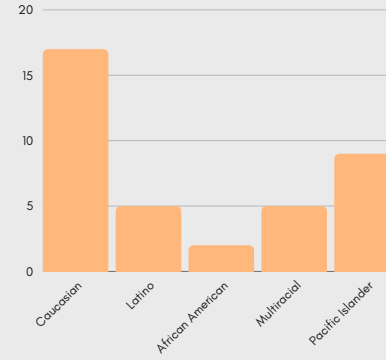


**Enrollment status**

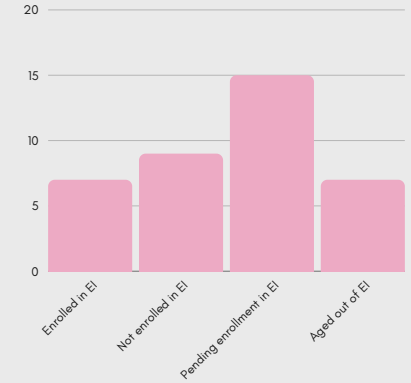
Matched = 38, Unable to reach = 16, Not interested = 3  
Follow up with family at a later date = 0, No hearing loss = 1



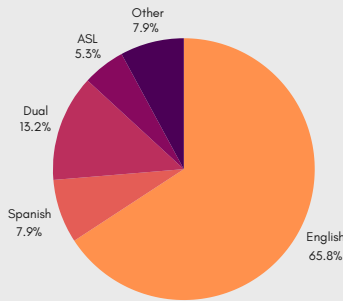
**Medical history of enrolled child**



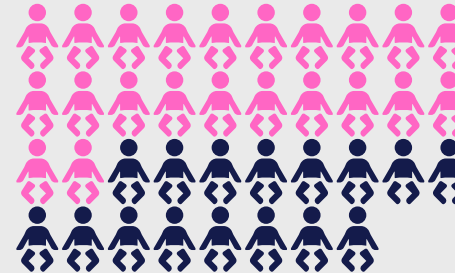
**Racial identity of enrolled child**



**Early Intervention status at time of enrollment**  
Pending enrollment means that the family has had contact with EI and is working through the enrollment process.

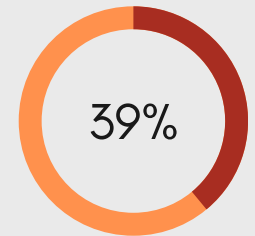


**Primary language in the home**



**Gender of those enrolled**

Pink = Female  
Blue = Male



**Amplification status at time of enrollment**

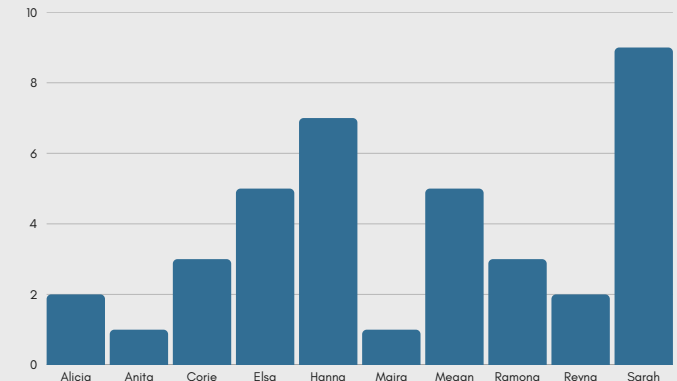
Orange = No hearing technology in use  
Red = Using hearing technology

THIS QUARTERLY REPORT IS SUPPORTED IN PART BY GRANT FUNDING THROUGH THE IL EARLY HEARING DETECTION & INTERVENTION (EHDI) PROGRAM.



**Unilateral vs. Bilateral hearing loss**

Orange = Unilateral  
Blue = Bilateral



**Parent Guide Matches**